



MONTHLY MEMBERSHIP PROGRESS REPORT

District 2 S4

Results as of: 7/31/2014

GMT: HAL GRIFFIN

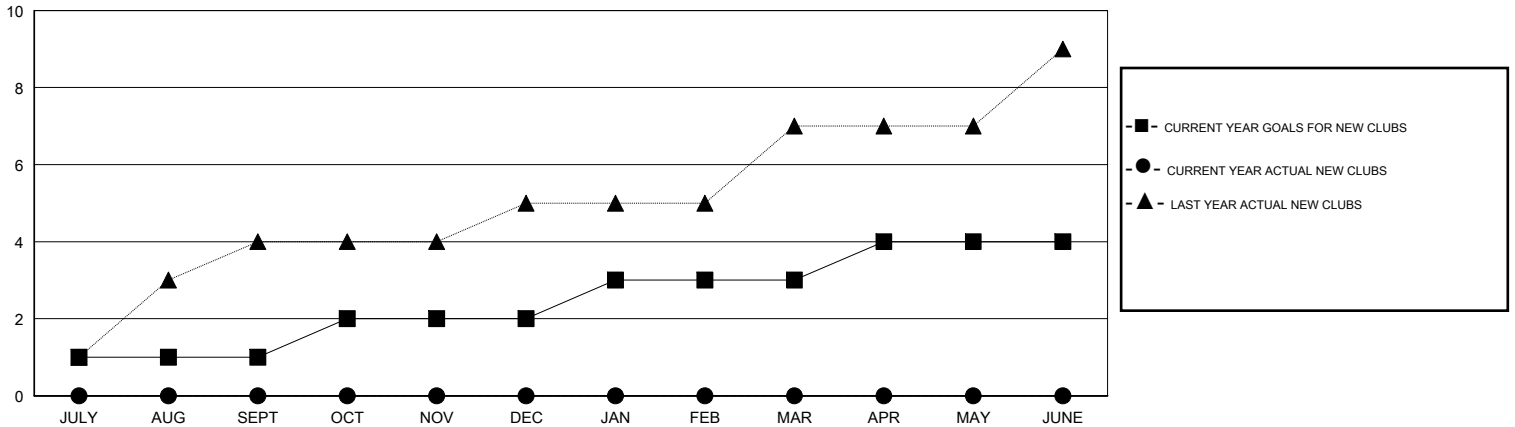
LOCATION TEXAS

GMT CA 1

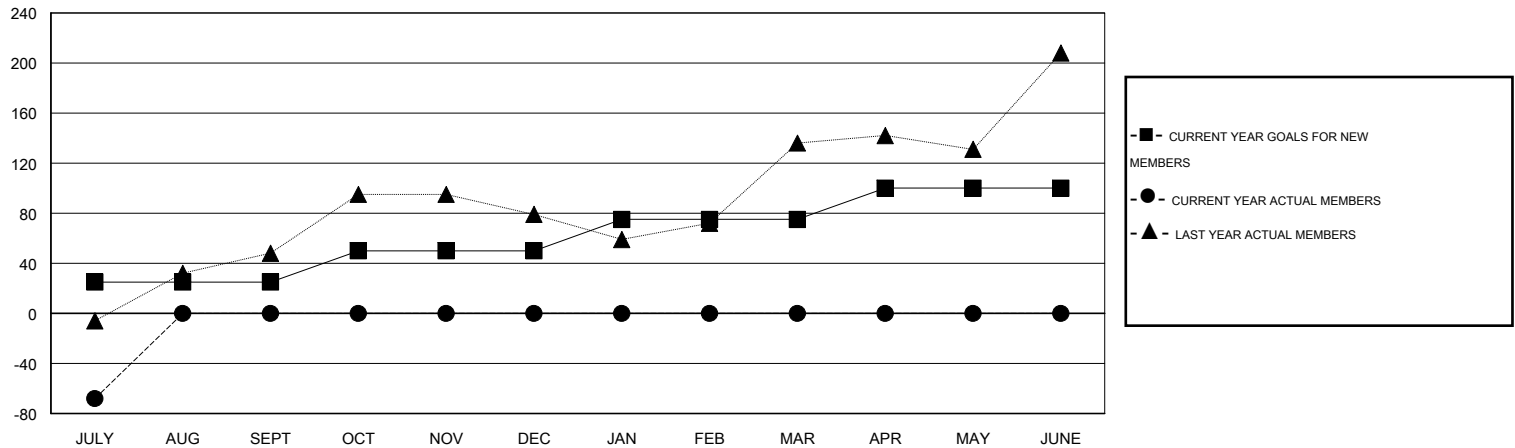
Clubs				
RESULTS FOR 2014-2015				
QUARTER	NEW CLUB GOAL	ACTUAL NEW CLUBS	ACTUAL DROPPED CLUBS	ACTUAL NET GAIN/LOSS
JULY/AUG/SEPT	1	0	0	0
OCT/NOV/DEC	1	0	0	0
JAN/FEB/MAR	1	0	0	0
APR/MAY/JUNE	1	0	0	0

Members				
RESULTS FOR 2014-2015				
QUARTER	NEW MEMBER GOAL	ACTUAL TOTAL MEMBERS ADDED	ACTUAL DROPPED MEMBERS	ACTUAL NET GAIN/LOSS
JULY/AUG/SEPT	25	31	99	-68
OCT/NOV/DEC	25	0	0	0
JAN/FEB/MAR	25	0	0	0
APR/MAY/JUNE	25	0	0	0

GOALS AND ACTUAL NEW CLUBS CUMULATIVE



GOALS AND ACTUAL MEMBERS CUMULATIVE



DROPPED CLUBS: 0	19 CLUBS OF 83 ADDED 1 OR MORE NEW MEMBERS	<u>GENDER DISTRIBUTION</u>	
<u>DROPPED MEMBERS</u>		MALE	1,496 (61.26%)
DECEASED	CLICK HERE FOR HEALTH ASSESSMENT DATA	FEMALE	946 (38.74%)
CLUB CANCELLED		FAMILY UNIT MEMBERS	455
OTHER		HEAD OF HOUSEHOLD	225
TOTAL		NON-HEAD OF HOUSEHOLD	230